

**Available
For Sale/Lease**

Centrally Located Office Building

348 S. Ida | Wichita, KS

Sale Information

Sale Price:

~~\$425,000~~ **\$395,000**

Building Size:

7,756 Sq. Ft.

Lot Size:

14,847 Sq. Ft.

Year Built:

1975 & 1985

Zoning:

Limited Industrial

2015 RE Taxes:

\$9,952.83

Lease Information

Space Available:

2,820 - 7,756 Sq. Ft.

Lease Price:

\$6.75/Sq. Ft.

Lease Type:

Modified Gross

Potential to Convert
South End to
Warehouse Space
with Drive-In
Overhead Door



Building Features:

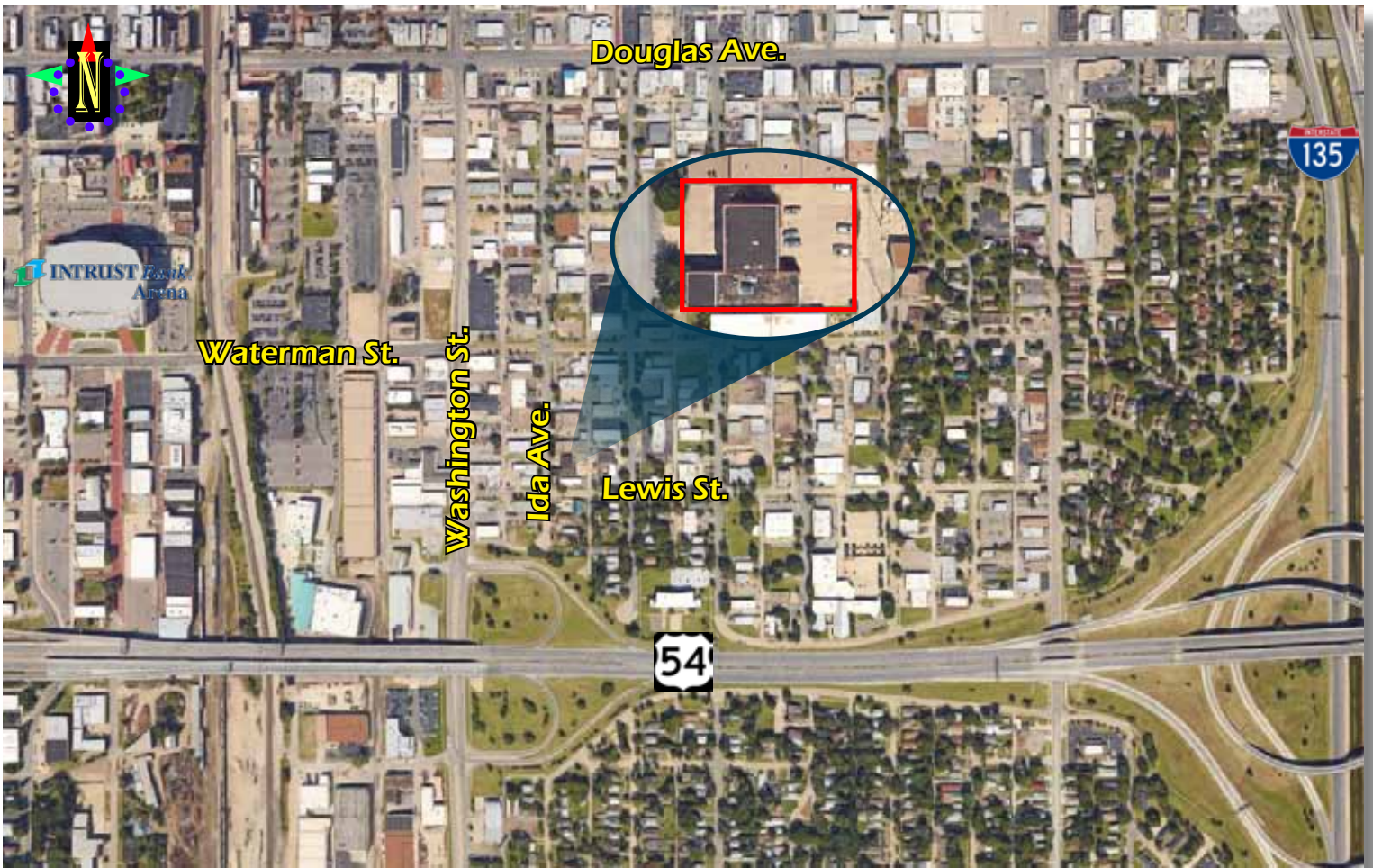
- Door-Side Parking
- Quality Finishes
- Well Maintained
- Private Offices
- Potential Warehouse
- Training Rooms
- Open Work Area
- Centrally Located
- Close Proximity to Kellogg (US-54)

For Information Contact:

Carl Hebert, CCIM

316-618-1100

cjhebert@insitere.com



⚡ Available
For Sale/Lease

Centrally Located Office Building
348 S. Ida | Wichita, KS

InSite
Real • Estate • Group
608 W. Douglas, Suite 106
Wichita, KS 67203

InSite
Real • Estate • Group

608 W. Douglas Suite 106
Wichita, KS 67203